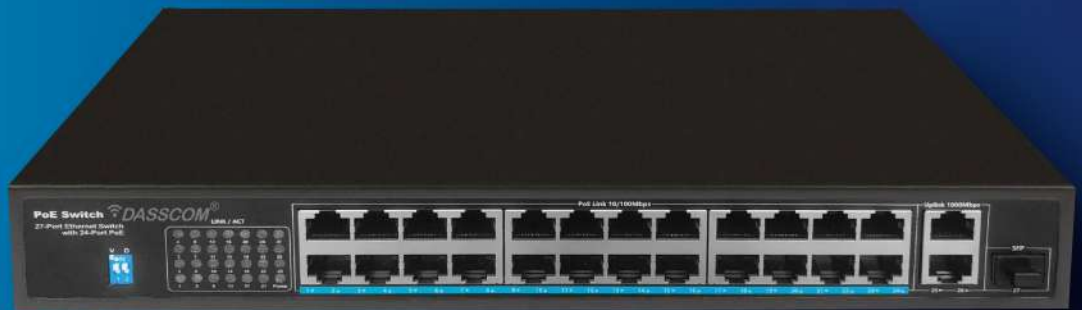


Unmanaged PoE Switches

27 Ports Gigabit Uplink PoE Fiber Switch

DES-P242MGS1



**ELEVATE YOUR CONNECTIVITY WITH
OUR LATEST NETWORK SWITCHES**

www.dasscom.com



DATASHEET

DES-P242MGS1

24*10/100M POE+2*GE RJ45+1* GF SFP PoE Switch

- ☆ 24*10/100M + 2*10/100/1000M RJ45 Ports + 1*100/1000M SFP Port PoE Switch, 1-24 ports support IEEE 802.3af/at;
- ☆ Comply with IEEE 802.3, IEEE 802.3u, IEEE802.3ab, IEEE802.3z standards
- ☆ PoE port support AF/AT intelligent recognition. Standard power is 15.4W/port, Maximum power: 30W/port
- ☆ Support AI Watchdog, Port self-healing, VLAN, extend 300meter distance & reduce the after-resale;
- ☆ Supports POE devices such as wireless access points (APs) and network surveillance cameras through Category 5/6 Ethernet cables;
- ☆ The Power supply is 300W;
- ☆ 1 years warranty



Introduction;

The DES-P242MGS1 is an unmanaged PoE switch, it has 24*10/100M PoE ports + 2*1000M RJ45 Ports + 1*100/1000M SFP Port PoE Switch, Port 1-24 can support IEEE 802.3af/at standard PoE power supply, single port PoE power up to 30W, and the maximum POE output power is 300W. As a PoE power supply device, it can automatically detect and recognize the power receiving equipment that meets the standard and supply power through the network cable. It can supply power to POE terminal equipment such as wireless AP, webcam, VoIP phone, video access control intercom, etc. through network cable to meet the network environment that needs high-density PoE power supply. It is suitable for hotels, campuses, factory quarters and small and medium-sized enterprises to form an economy Efficient network

DATASHEET

Technical Specifications;

Model	DES-P242MGS1
Fixed Port	24*10/100Base-TX PoE ports (Data/Power) 2*10/100/1000Base-T RJ45 ports (Data) 1*100/1000Base-X uplink SFP fiber slot (Data)
POE Port	Port 1-24 support PoE @ IEEE802.3af/att
Feature	With the Dial code switch, E: AI Extend 300meters transmission; V: Turn on, 1-24 Port support each port Isolation & VLAN; Support Watchdog function by default: 1-24 Port support AI-PoE Network self-healing mode (PoE Watchdog function), Automatic solve the camera problem & reduce after-sale.
Fan	Non-Fan, silent working status can satisfy more users with different requirement
Network Protocol	IEEE802.3 10BASE-T; IEEE802.3i 10Base-T; IEEE802.3u 100Base-TX/FX; IEEE802.3ab 1000Base-T; IEEE802.3z 1000base-X; IEEE802.3x.
PoE Standard	IEEE802.3af/at
Ethernet Port	10/100Base-T(X) 10/100/1000 Base-T automatic detection, full/half Duplex MDI/MDI-X adaptive
Switching Capacity	10.8Gbps (non-blocking)
Forwarding Rate	8.05Mpps
MAC	8K
Buffer Memory	4M
Twisted Pair Transmission	10BASE-T: Cat5 UTP (≤ 300 meter) 100BASE-TX: Cat5 or later UTP (≤ 100 meter) 1000BASE-T: Cat5 or later UTP (≤ 100 meter)
Power Supply Pin	Default 1/2(+), 3/6(-)
MAX / AVERAGE Power Per Port	30W/15.4W
Total PWR / Input Voltage	300W (100-240V)
Power Consumption	Standby:<5W; Full load:<300W
LED Indicator	Power indicator: PWR (Green); Network indicator: 1-4(Link/Act)/ (Green),5-6(Link/Act)/ (Green)
Power Supply	Built in switching power supply, AC100~240V 50-60Hz 4.1A
Operation TEMP / Humidity	-20~+55°C:5%~90% RH non condensing
Dimension	310*205*44mm

DATASHEET

Net /Gross Weight	<2.8kg
Protection	IEC61000-4-2(ESD): ±8kV contact discharge, ±15kV air discharge IEC61000-4-5(Lightning protection/Surge): Power:CM±4kV /DM±2kV; Port: ±4kV
Protection Level	IP30
Fiber Port Feature	Gigabit SFP Port (Fiber module is not included, need to order separately, module options include single/multi-mode, single /dual fiber, LC)
Installation Method	desktop type, wall mounted,19-inch 1U cabinet installation
Certification	FCC; CE mark, commercial;CE/LVD EN60950; FCC Part 15 Class B;RoHS
Warranty	1 year, lifetime maintenance.

Packaging List

CONTENT	QTY	UNIT
24 Ports PoE with 2*Giga RJ45 and 1*GF SFP (DES-P242MGS1)	1	SET
Hanging Ear	1	Pair
User guide	1	SET
Warranty card	1	SET

